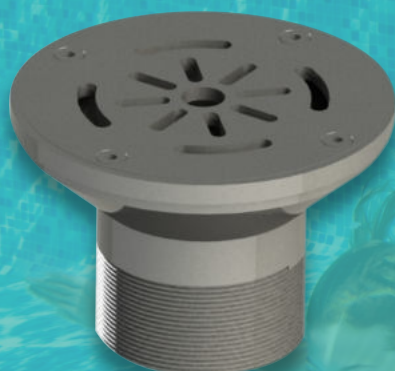


DRAINS & INLETS



DRAINS AND INLETS are the most fundamental fittings in a fountain & pool .

They are used to empty AND SUPPLY the basin quickly and efficiently .

THEY ARE designed to fit in all kinds of pools and fountain The armature is entirely made of AISI 304 stainless steel (or 316 on request) to offer superior quality, impact & corrosion resistance .

The protection grill can be easily removed for cleaning and maintenance .



WALL INLET

00456

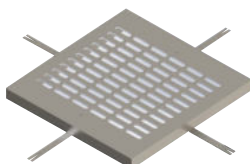
- Available in 1 1/2" inlet size
- Available with winter cover
- NPT and BSPT threading available 7m3/h



ADJUSTABLE FLOOR INLET

00466

- Available in 1 1/2", 2" inlet size
- Available with winter cover
- NPT and BSPT threading available 7:15.5m3/h



SUCTION DRAIN SQ

SQ0115

- Flush-mounted for no trip hazards drain comes with a foot-friendly flat grate for use in interactive water features .

AVAILABLE IN :

- 200x200 mm
- 300x300 mm
- 400x400 mm



SUCTION DRAIN RN

RN0116

- Flush-mounted for no trip hazards drain comes with a foot-friendly flat grate for use in interactive water features .

AVAILABLE IN :

- 300 mm
- 400 mm



VACUUM FITTING

00581

- vacuum fitting used for pool maintenance
- Available in 1 1/2", 2" inlet size
- NPT and BSPT threading available